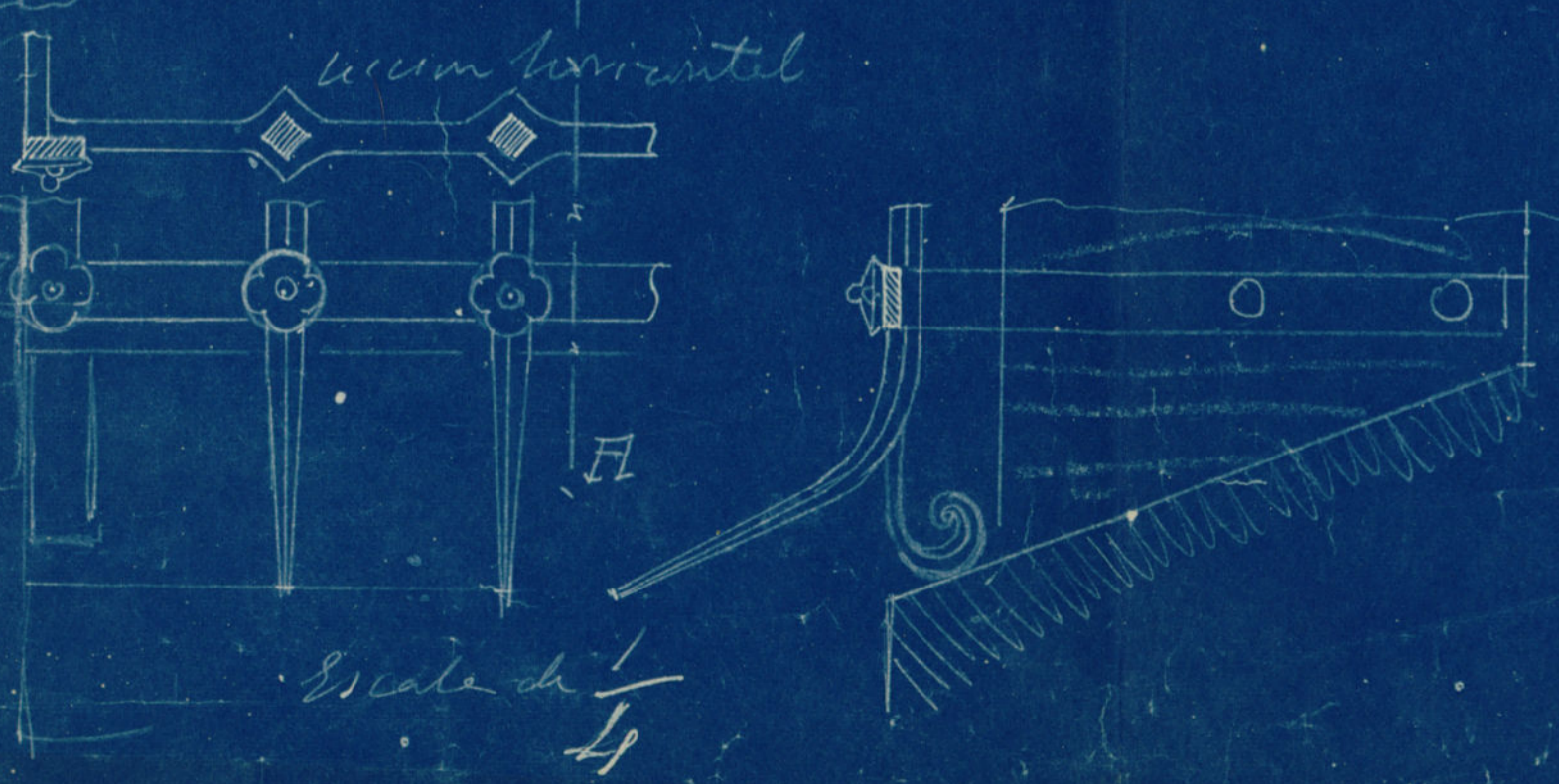
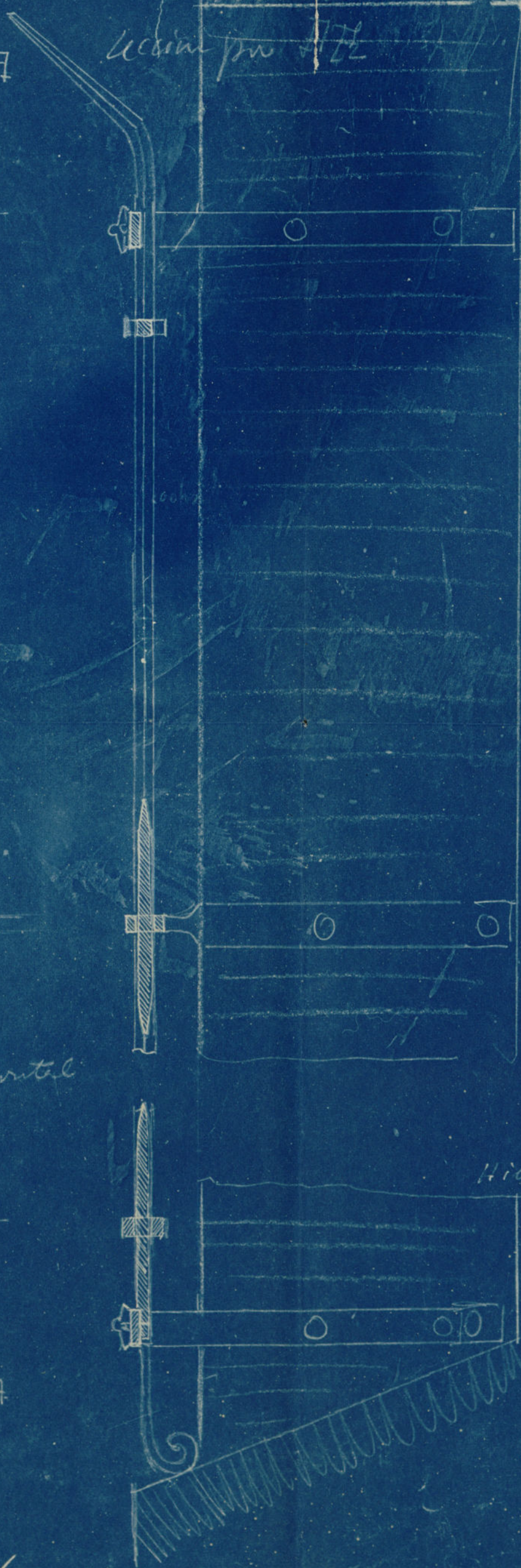
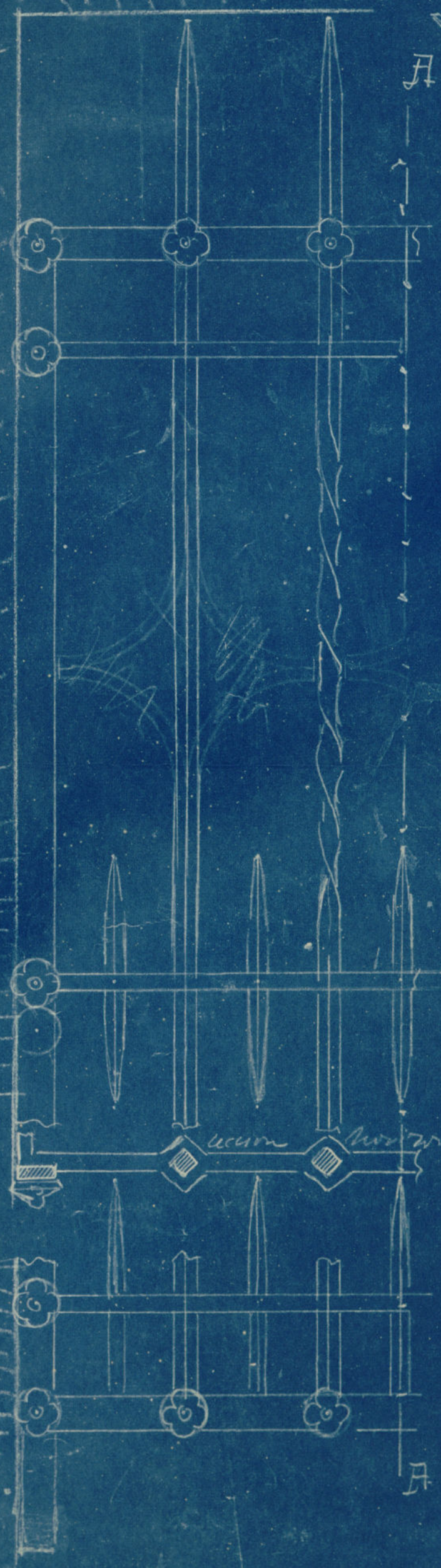


Hierros { Cuadrados — 17 mm
Pletinas — 60 x 8 mm



Detalles de la estructura de la cubierta



Sección por A-A

Sección horizontal



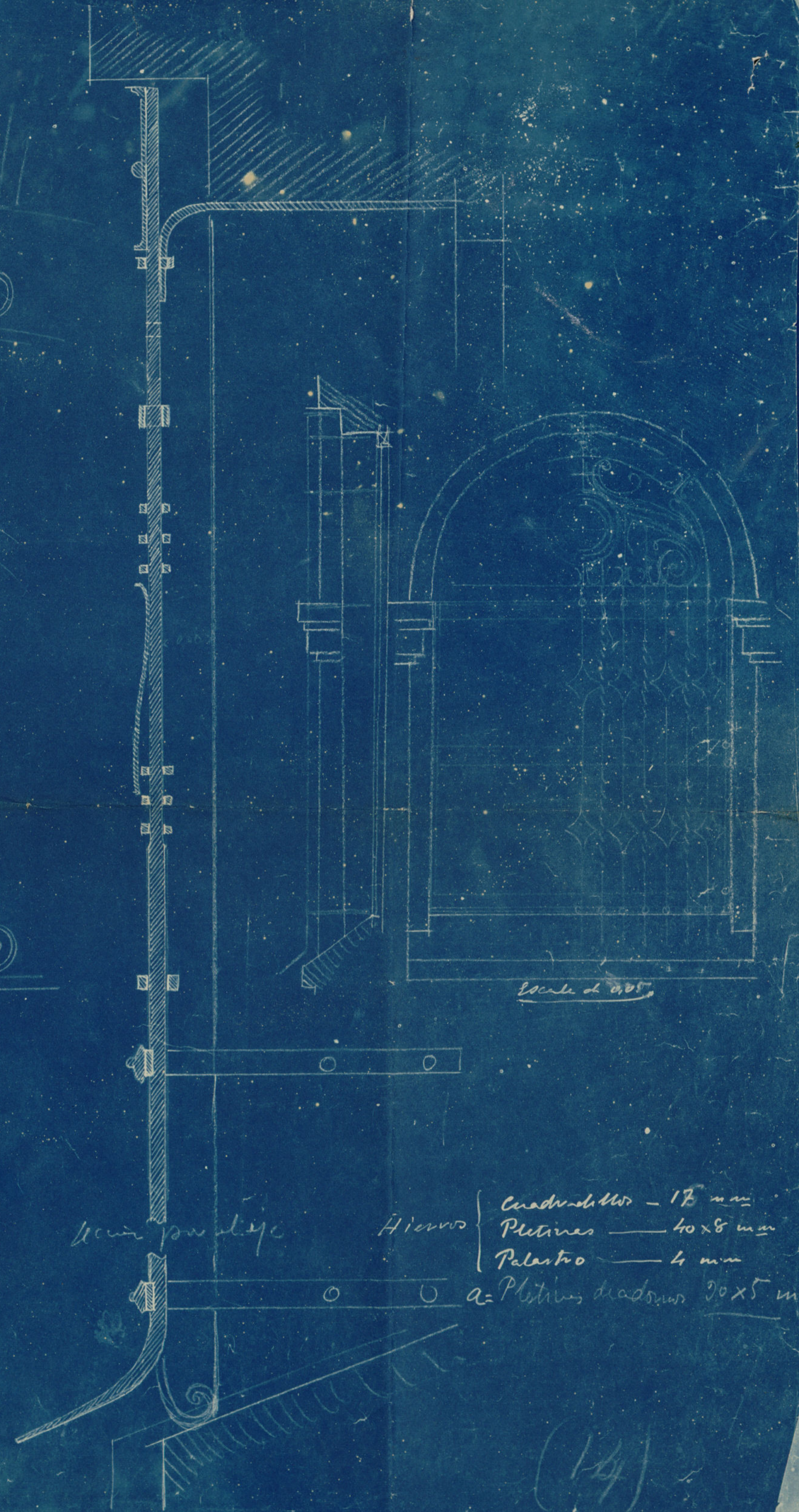
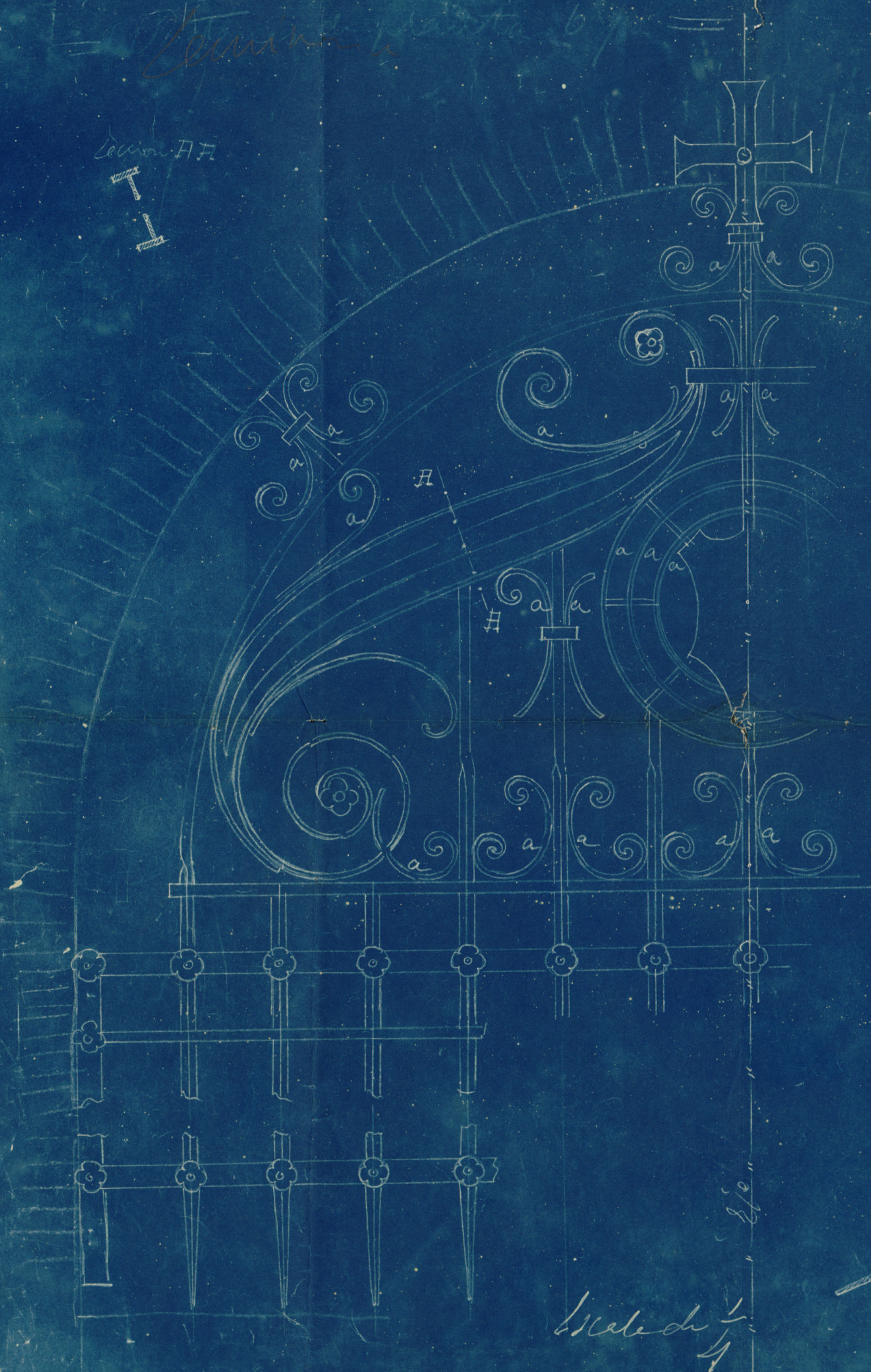
Escala de 0,05

Hierro { Cuadradillos — 17 mm.
 { Pletinas — 40 x 5 mm

Escala de 1/4

Columna para b. p.

Columna FF



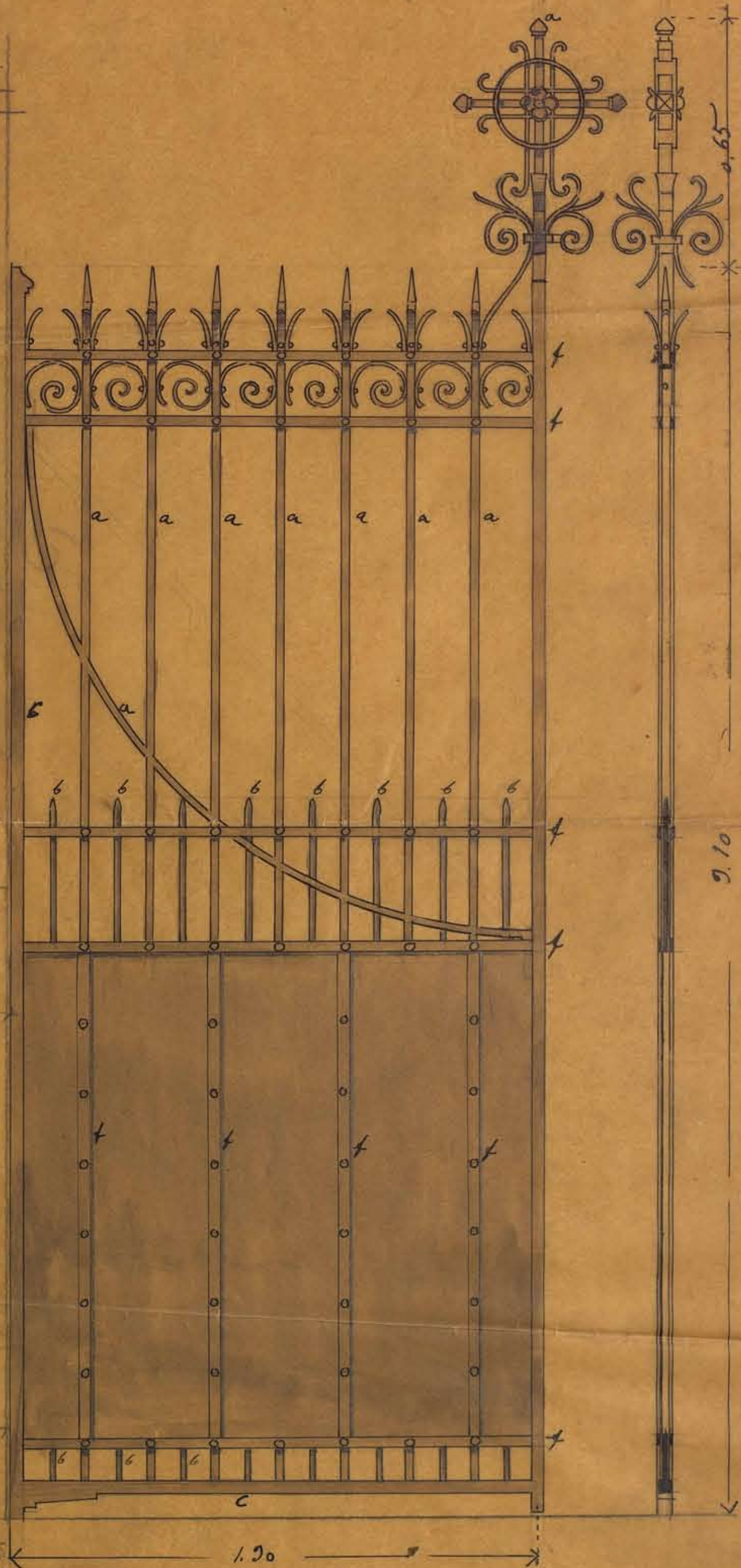
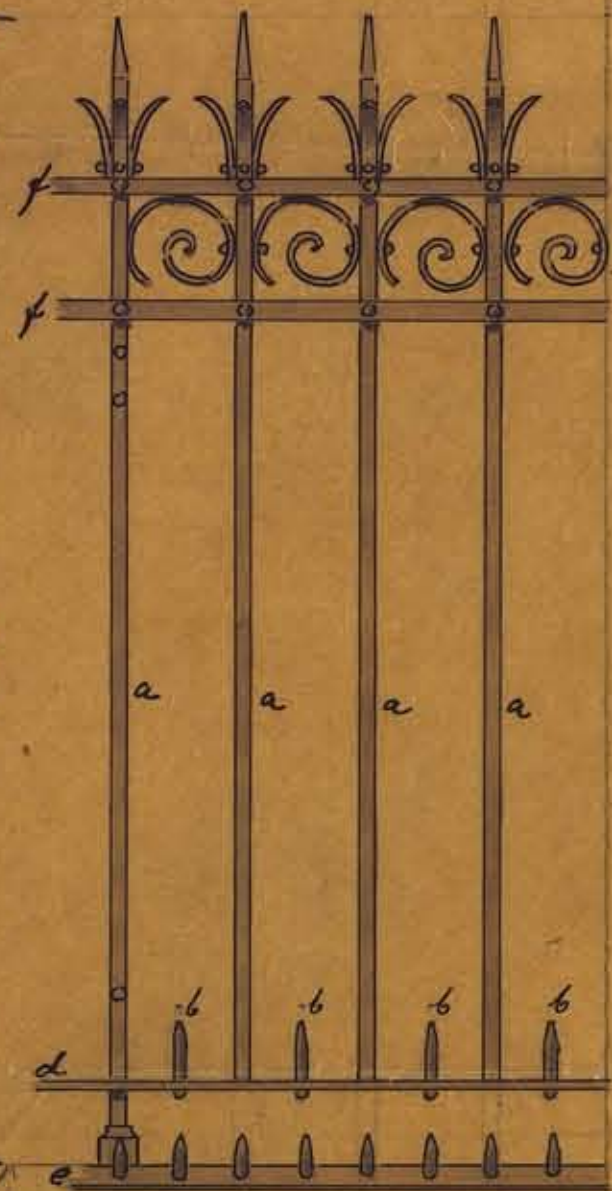
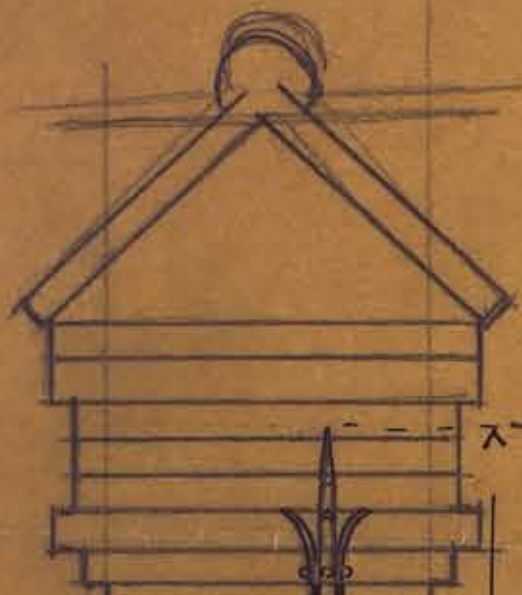
Columna para b. p.
 Hierros {
 Cuadrados — 12 mm
 Platinas — 40x8 mm
 Palastro — 4 mm
 a = Platinas diagonales 20x5 mm

Detalle de 1/4

(154)

Armi nuevo

150
160



- a = cuadrado de 20 x 20 mm
- b = redondos de 18 x 18
- c = cuadrado de 40 x 40
- d = flauta de 50 x 10
- e = flauta de 40 x 8
- f = flauta de 30 x 8

0.10

0.60

0.64

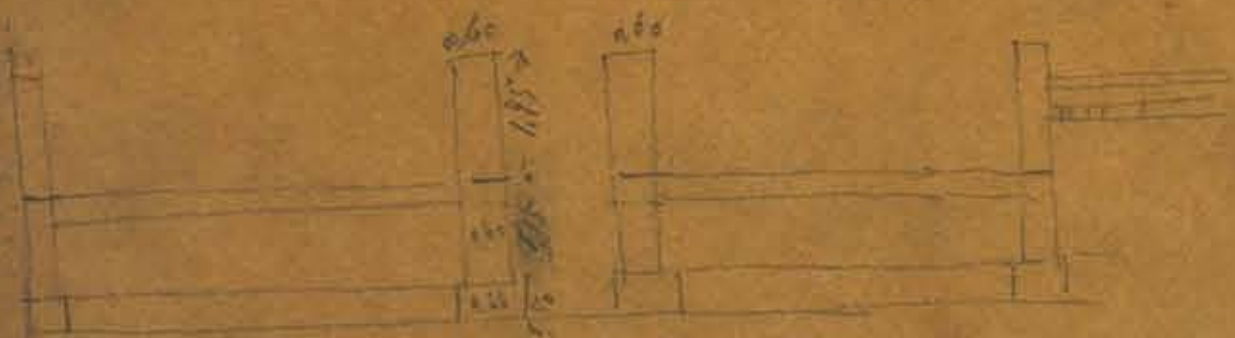
E = 0.10

1.20

2.10

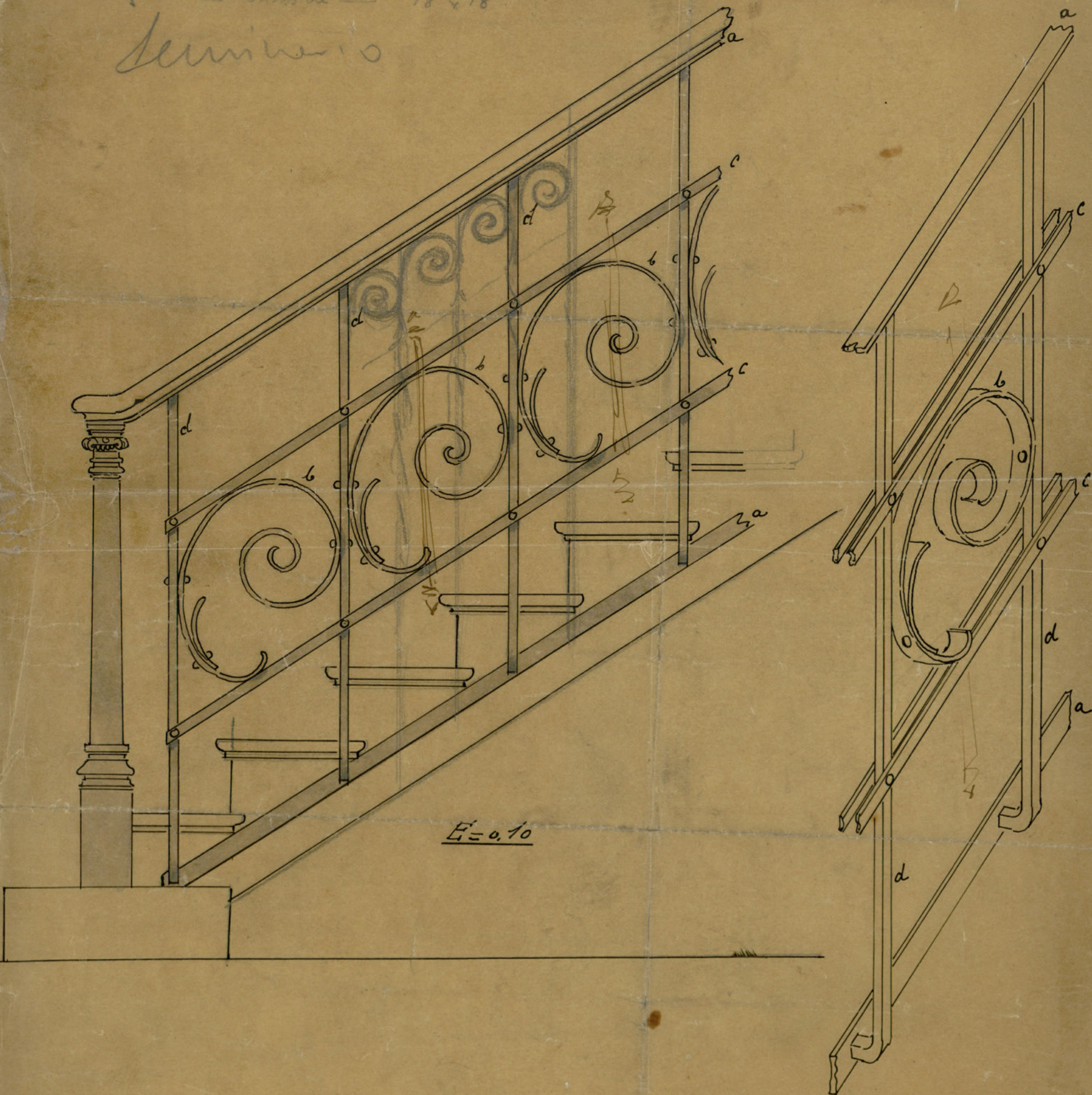


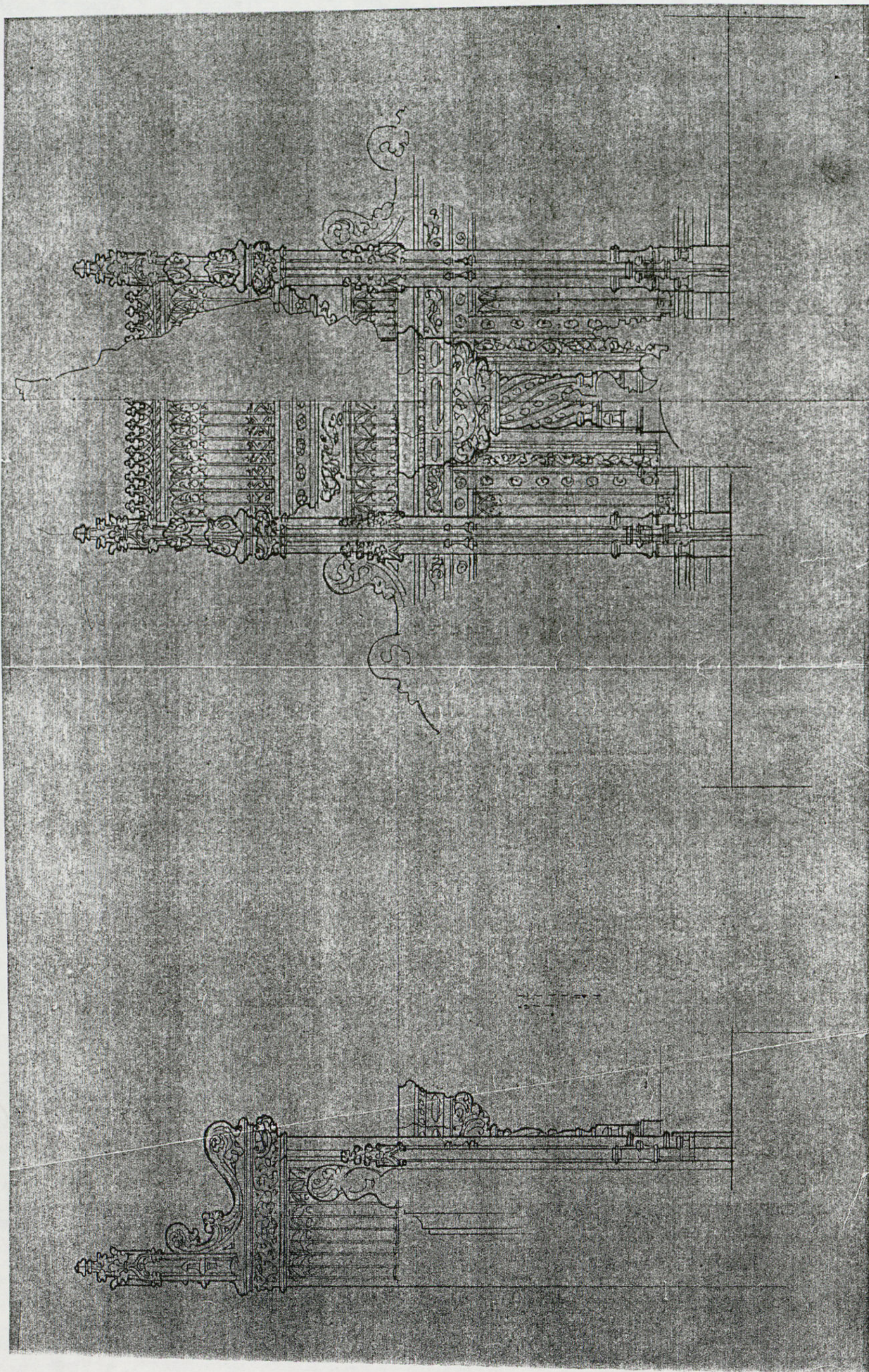
1.75
2.40



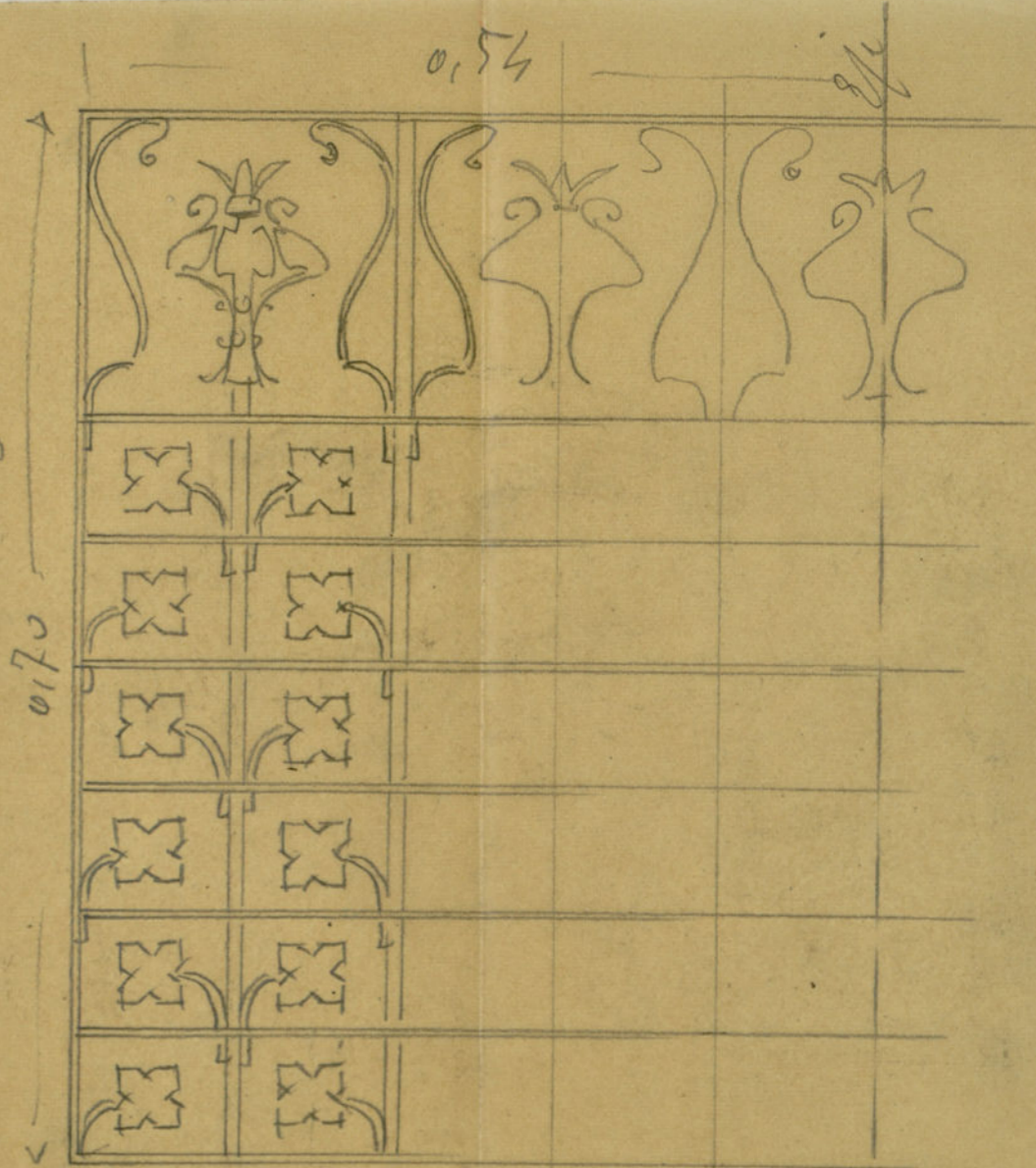
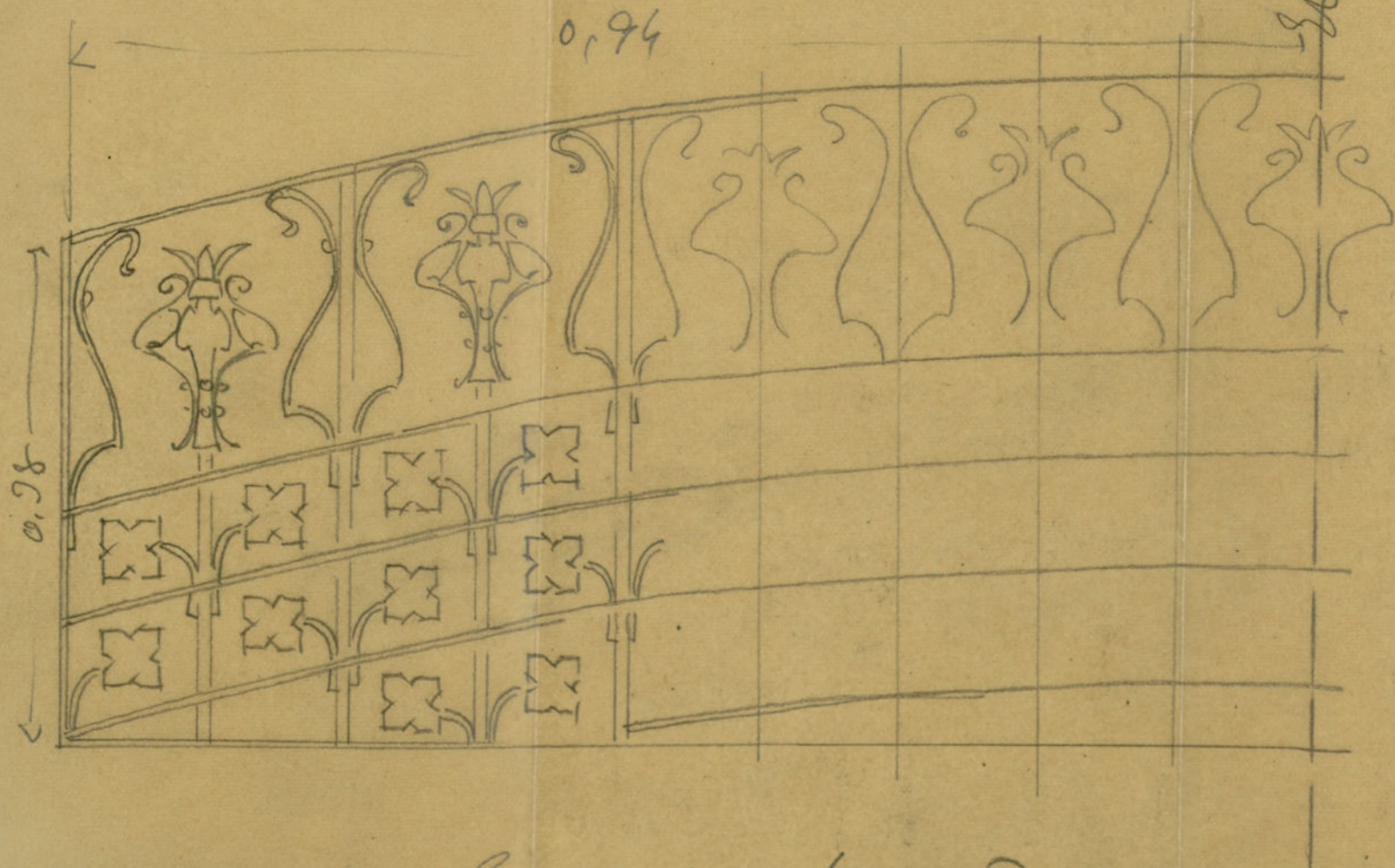
a = platinas de ——— 35 x 8 mm
 b = id de ——— 25 x 4 0
 c = id de ——— 25 x 6
 d = cuadradas de ——— 18 x 18

sereno





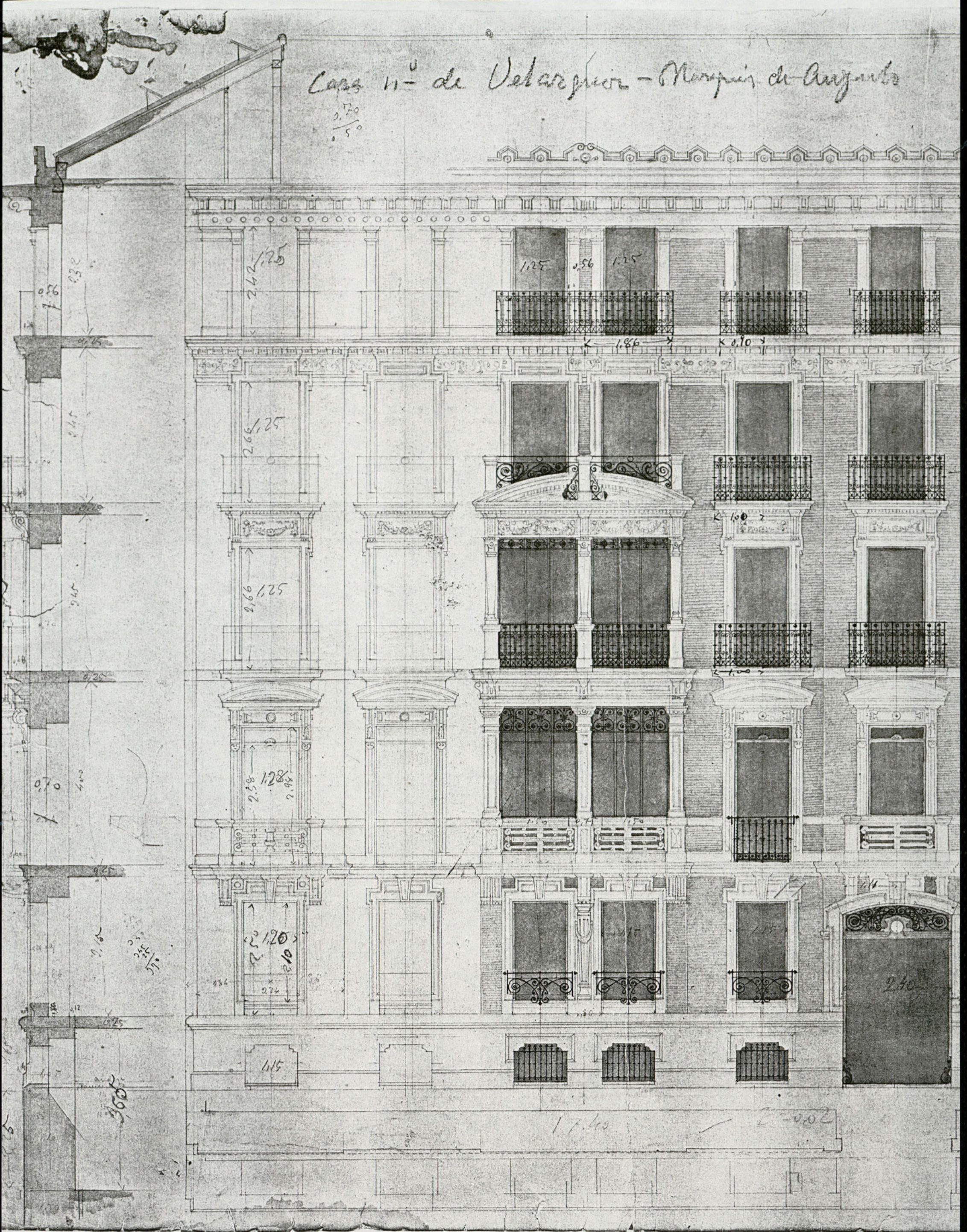
Ornamento

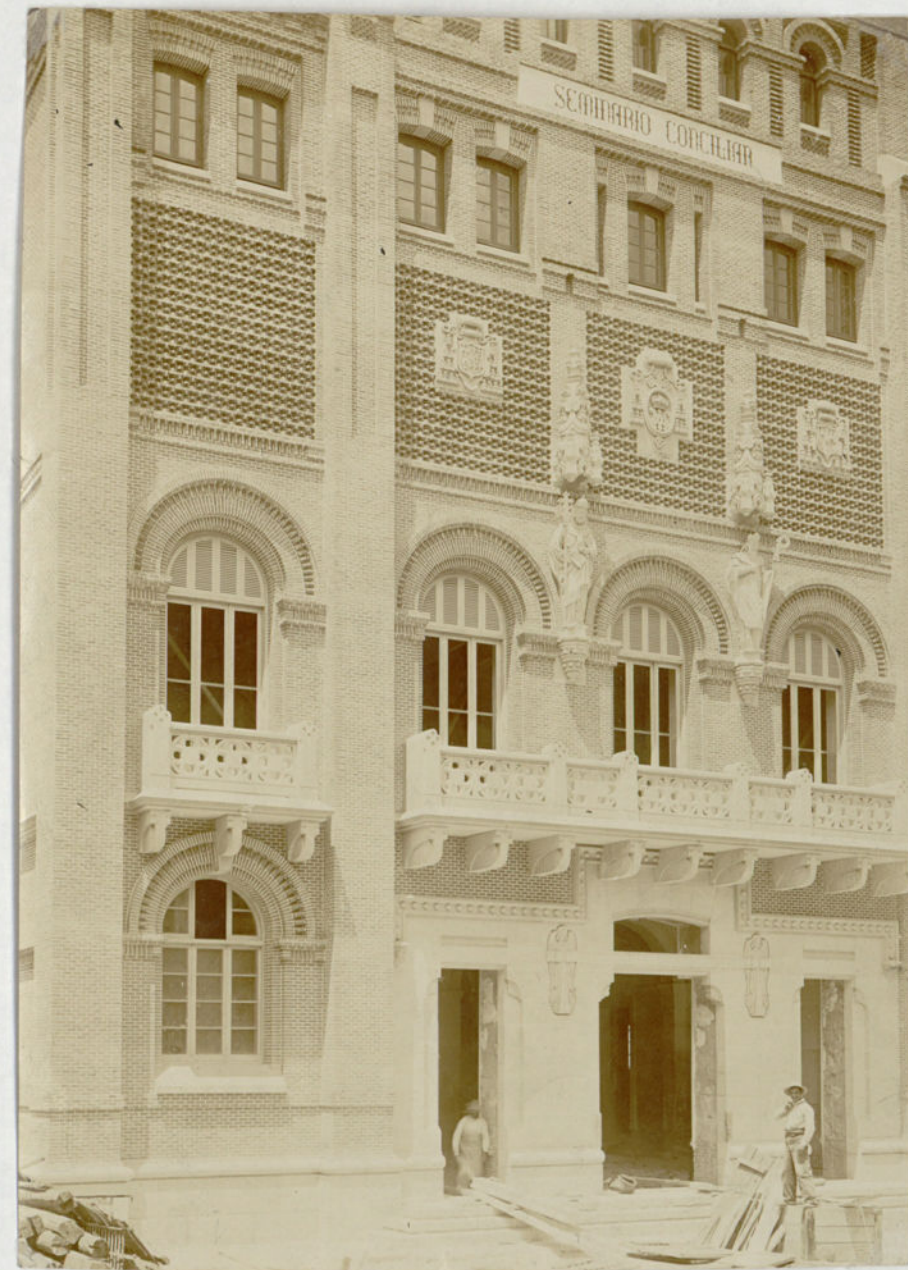


Ornamento de 0.20

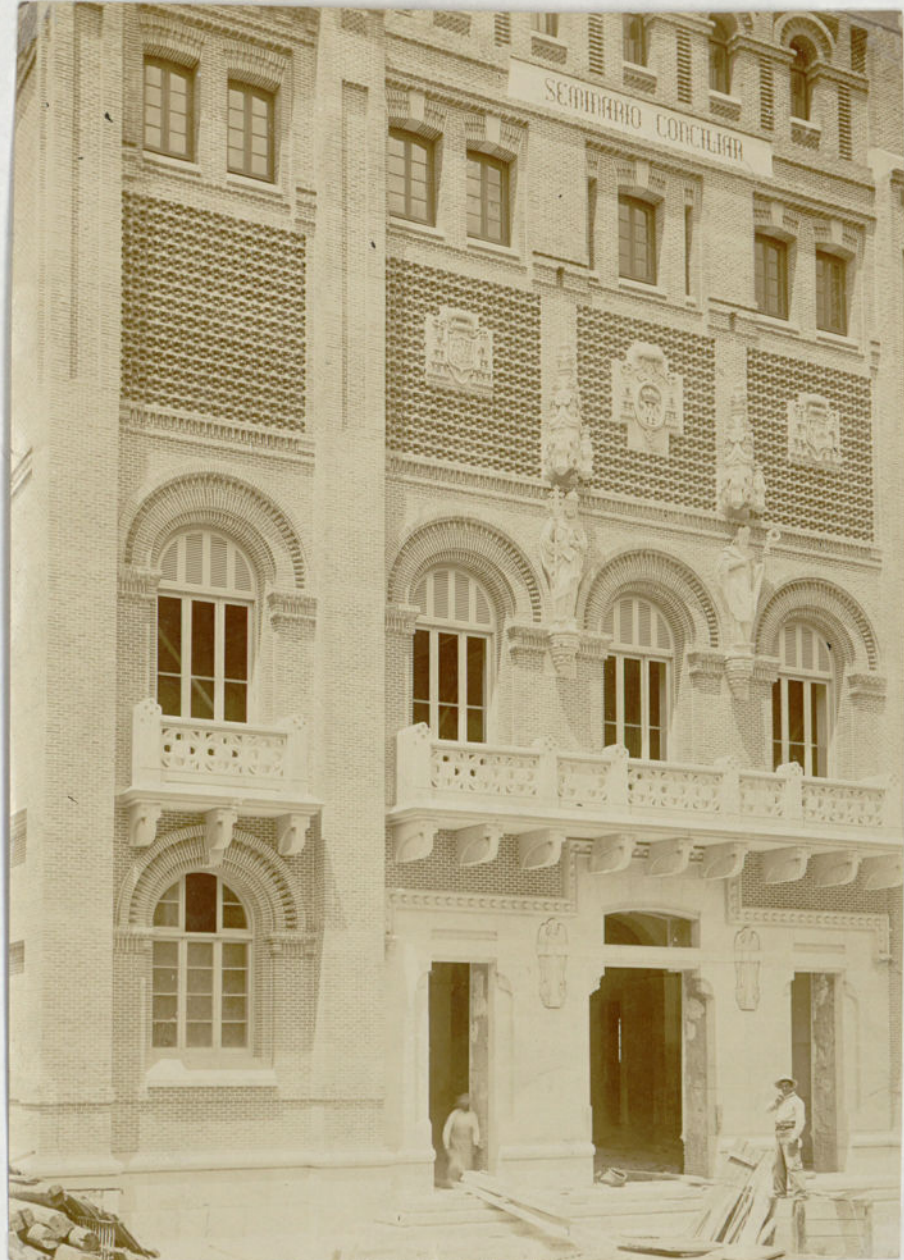
Casa n.º de Velazquez - Marquis de Argente

0,70
—
50





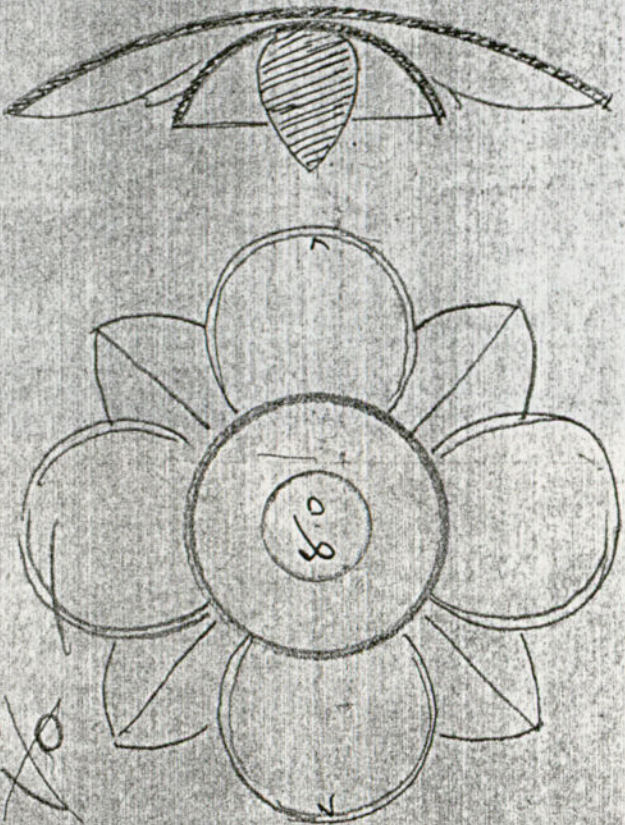
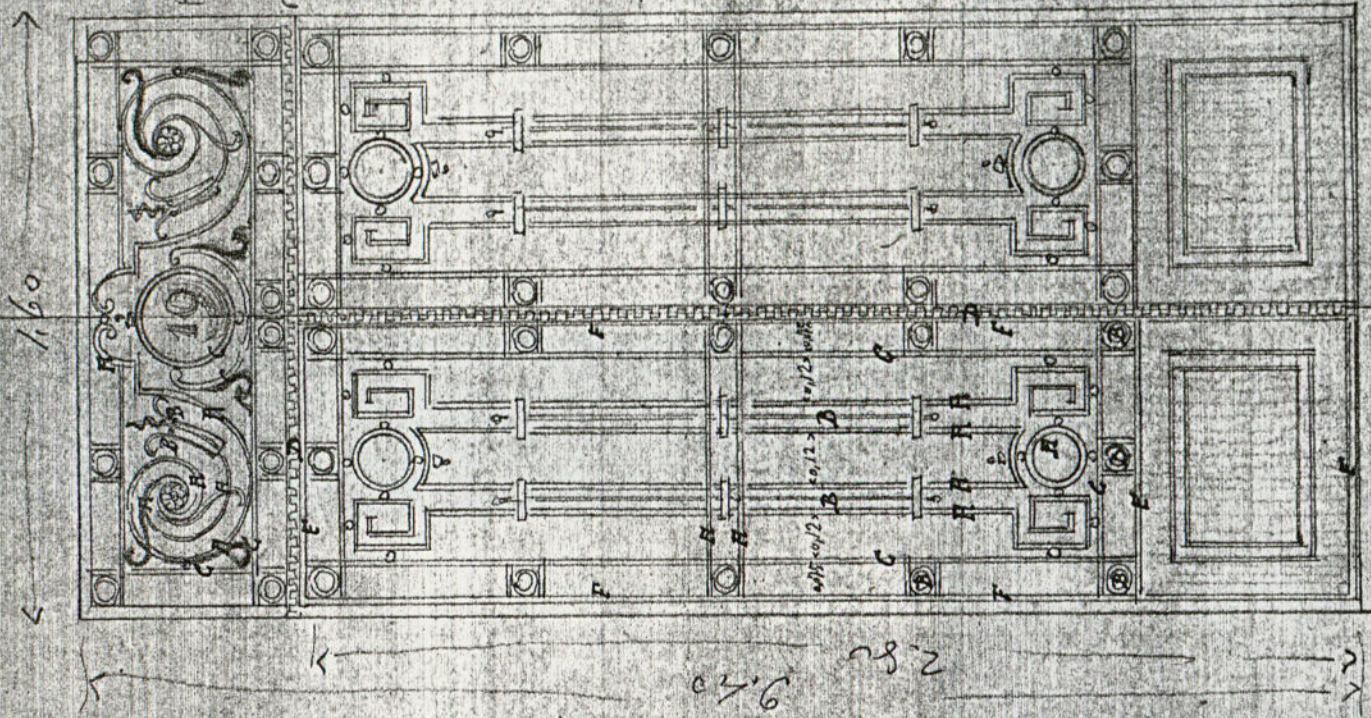




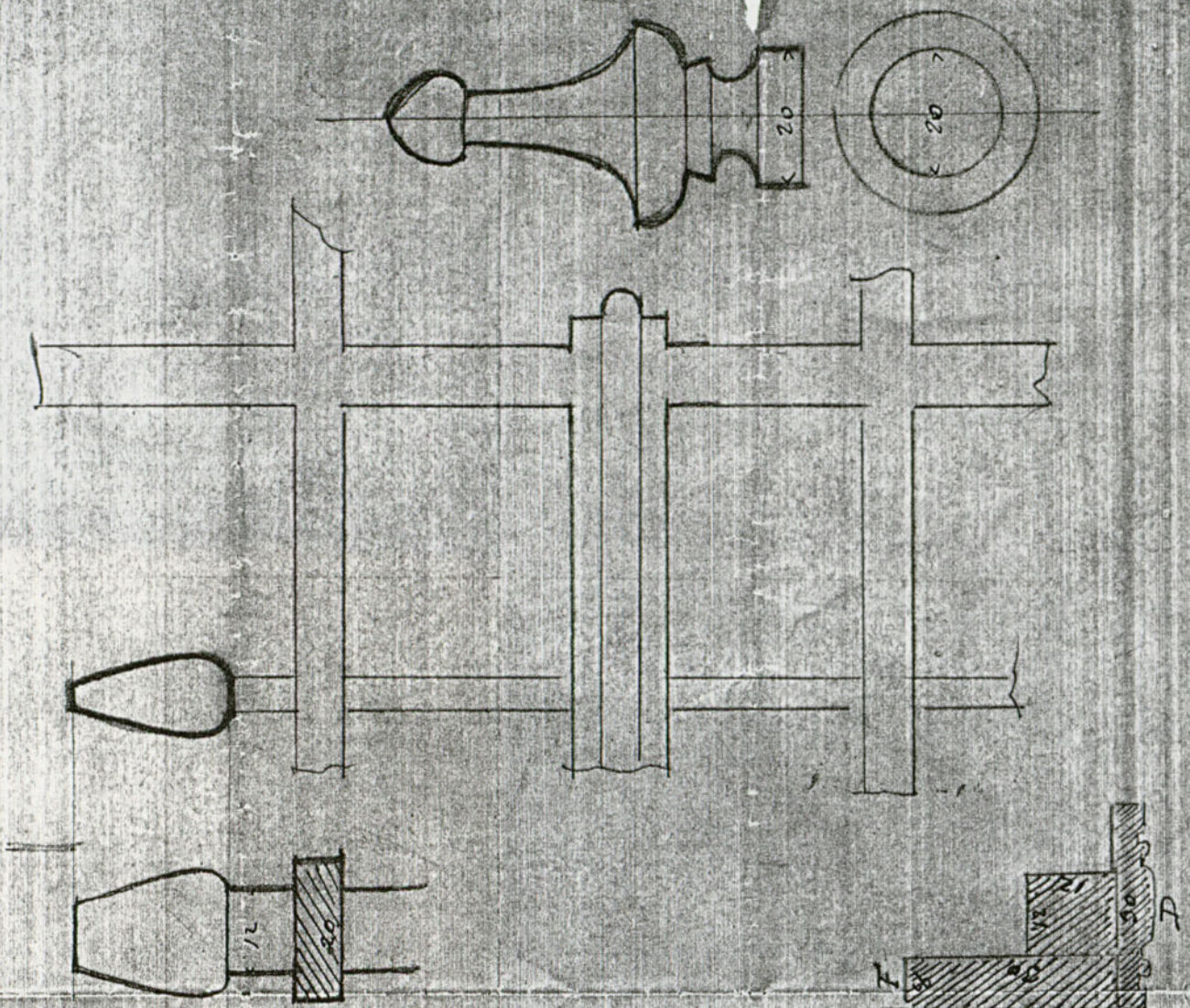
Para la calle

Lava 16

$L = 0,05$



Montante 200



E/c de detalle de balconcillos que hay(?) en un abaco del Seminario de Madrid

