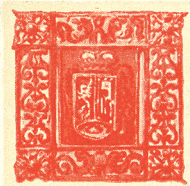


Filobibliou 4000pts
Cat. 507/1

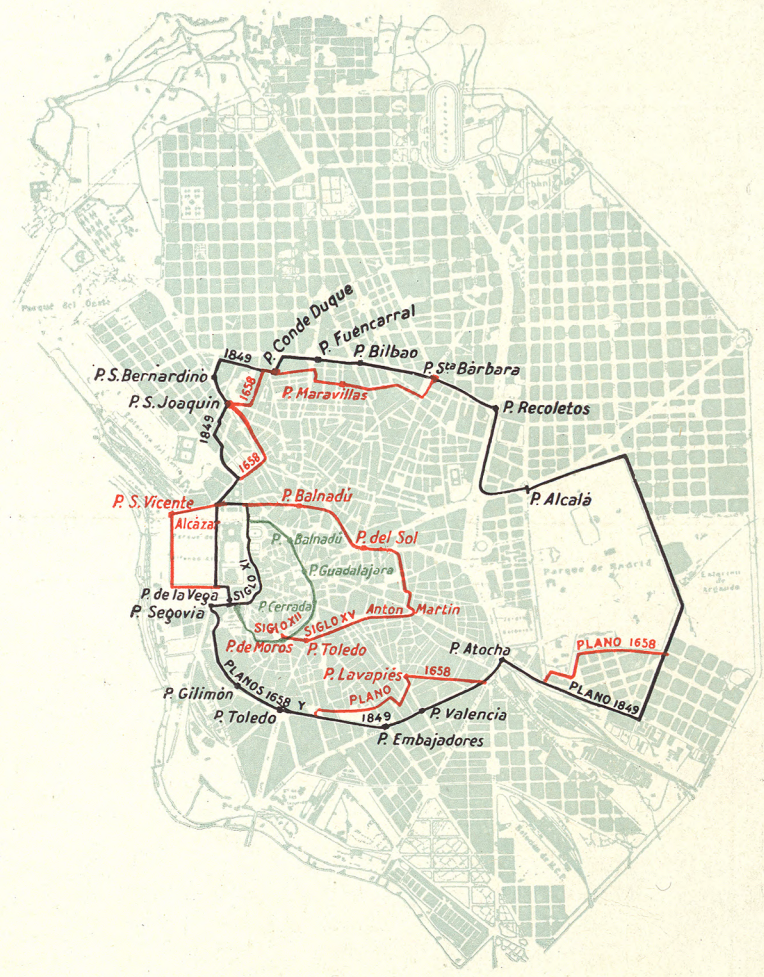
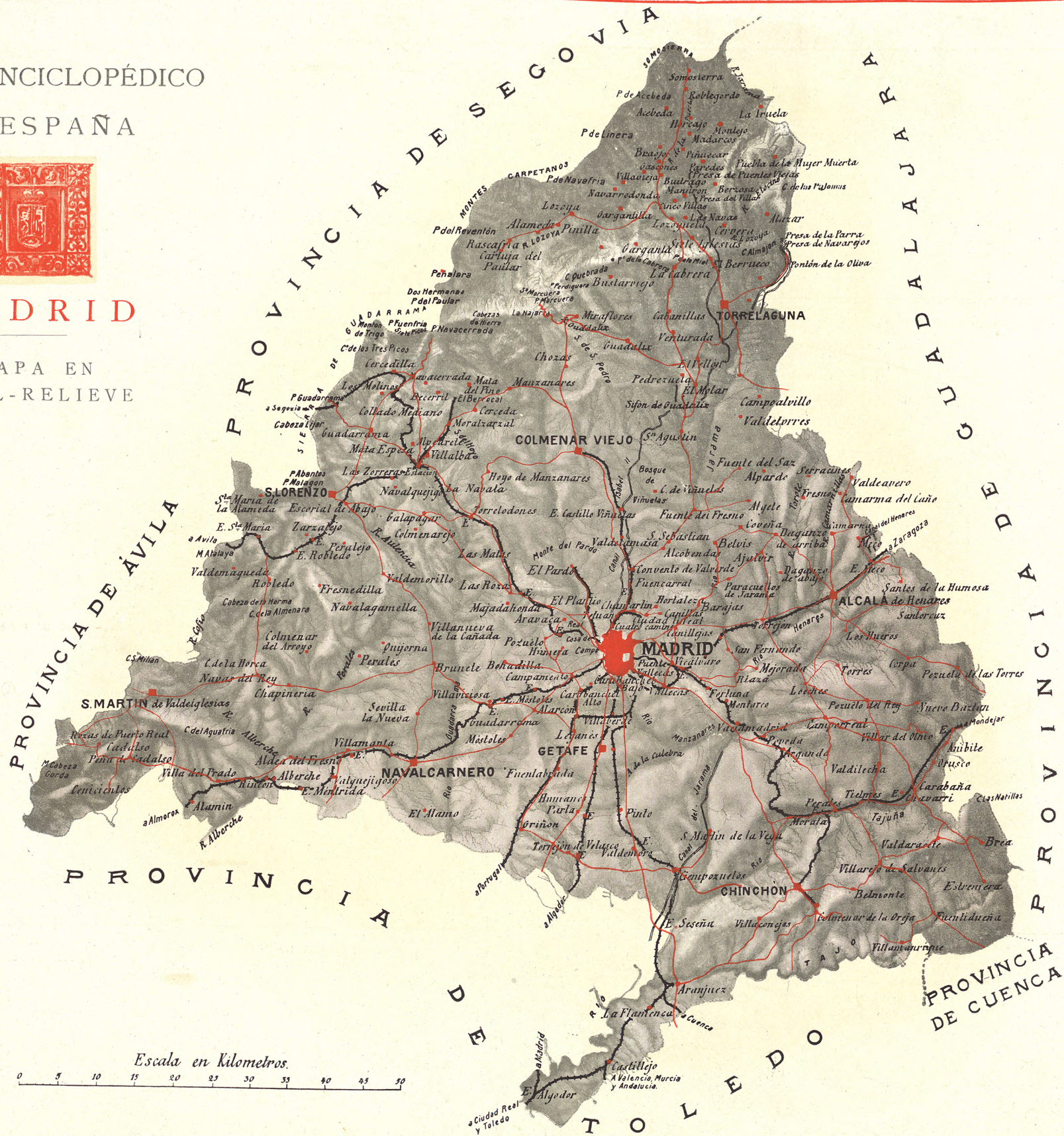
R.
49928

ATLAS ENCICLOPÉDICO DE ESPAÑA



MADRID

MAPA EN
SIMIL-RELIEVE



DESARROLLO URBANO DE MADRID DESDE EL PRIMITIVO
RECINTO MURADO DEL SIGLO XI HASTA LA FECHA



MADRID.—PLAZA DE CASTELAR



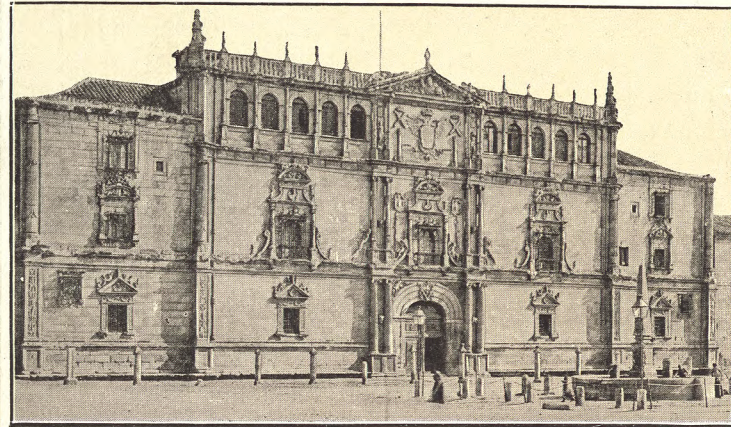
MADRID.—PALACIO REAL



MADRID.—PALACIO DE BIBLIOTECAS Y MUSEOS



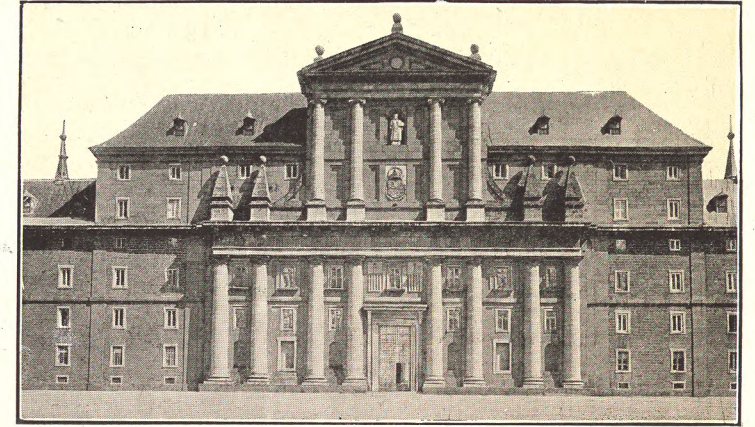
MADRID.—S. JERÓNIMO Y EL MUSEO DE PINTURAS



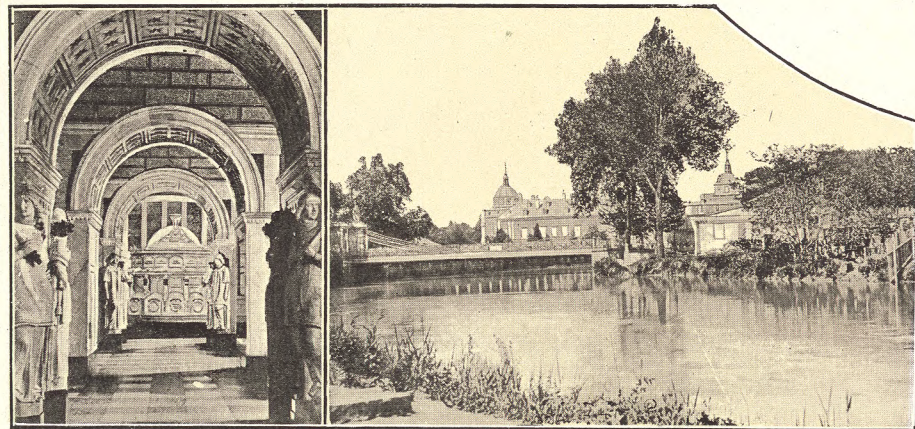
ALCALÁ DE HENARES.—LA UNIVERSIDAD



ESCORIAL.—VISTA GENERAL DEL MONASTERIO

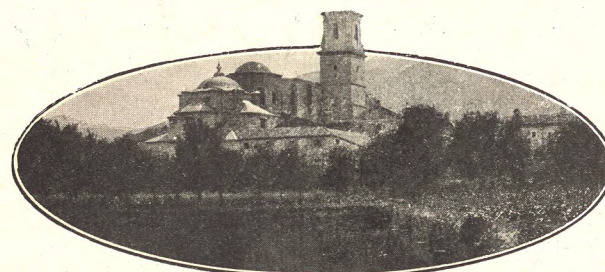


MONASTERIO DEL ESCORIAL.—FACHADA PRINCIPAL

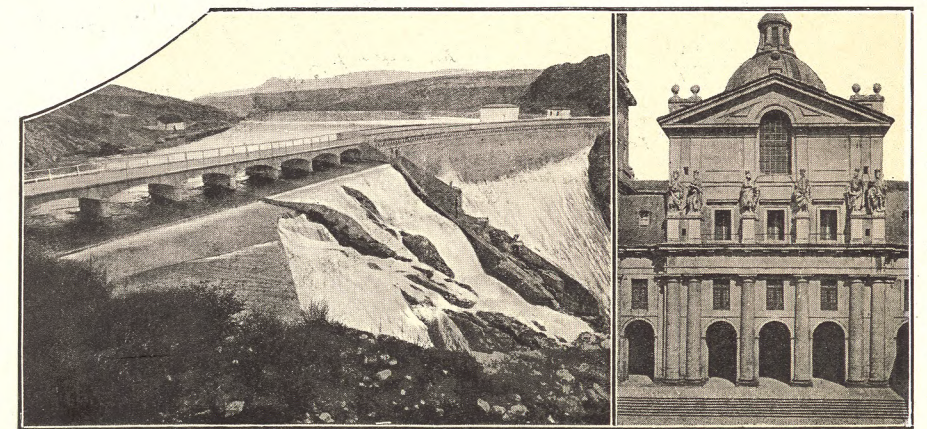


MONASTERIO DEL ESCORIAL
PANTEÓN DE INFANTES

ARANJUEZ

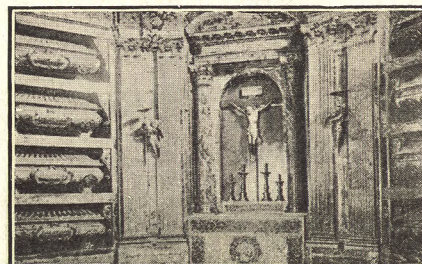


CARTUJA DEL PAULAR

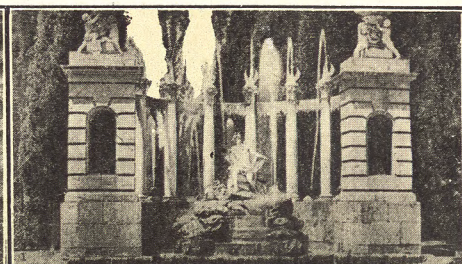


CANAL DE ISABEL II.—PRESA DEL VILLAR

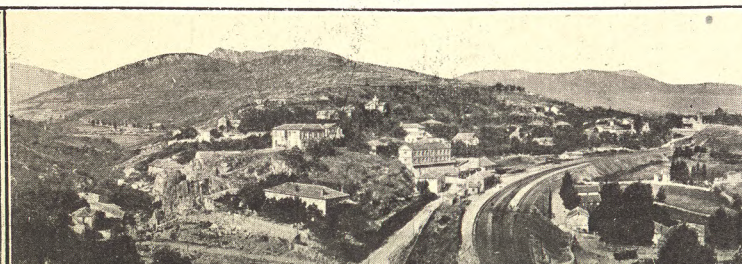
MONASTERIO DEL ESCORIAL
FACHADA DEL PATIO DE REYES



MONASTERIO DEL ESCORIAL
PANTEÓN DE REYES



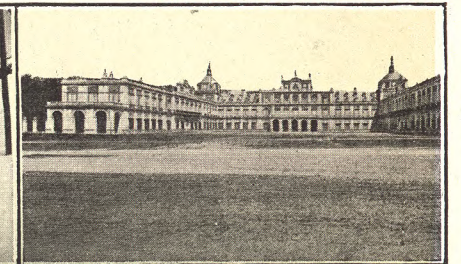
ARANJUEZ.—FUENTE DE APOLO



SIERRA DE GUADARRAMA.—CERCEDILLA.—VISTA GENERAL



GUADARRAMA.—DEPORTES ALPINISTAS



EL PARDO.—VISTA DEL PALACIO